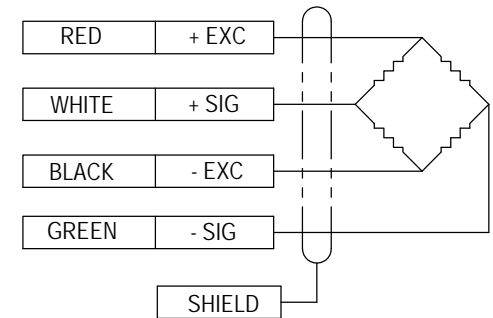
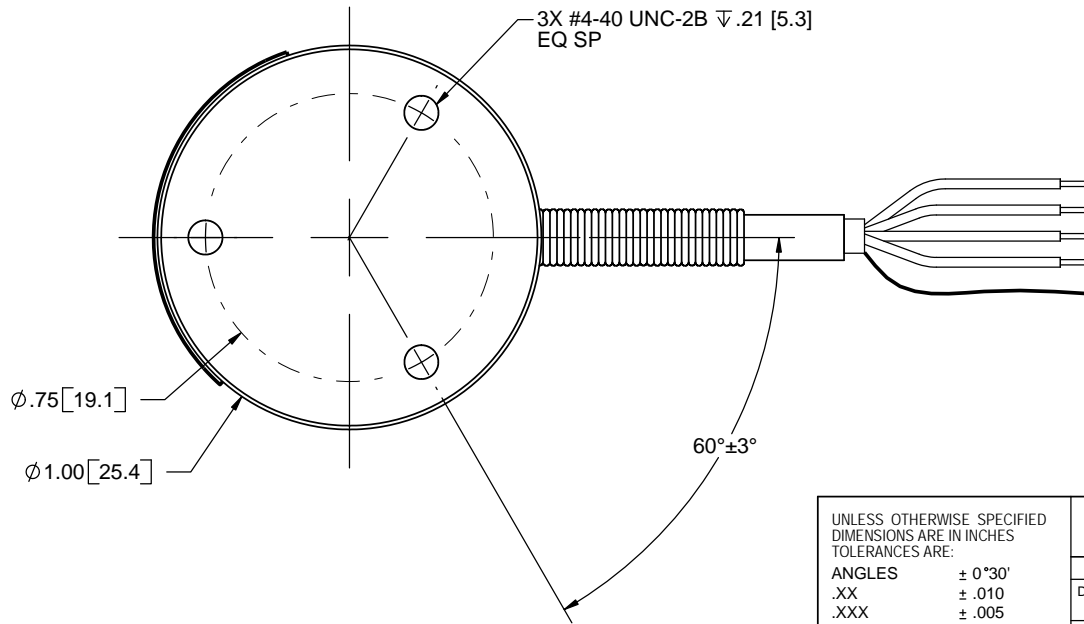
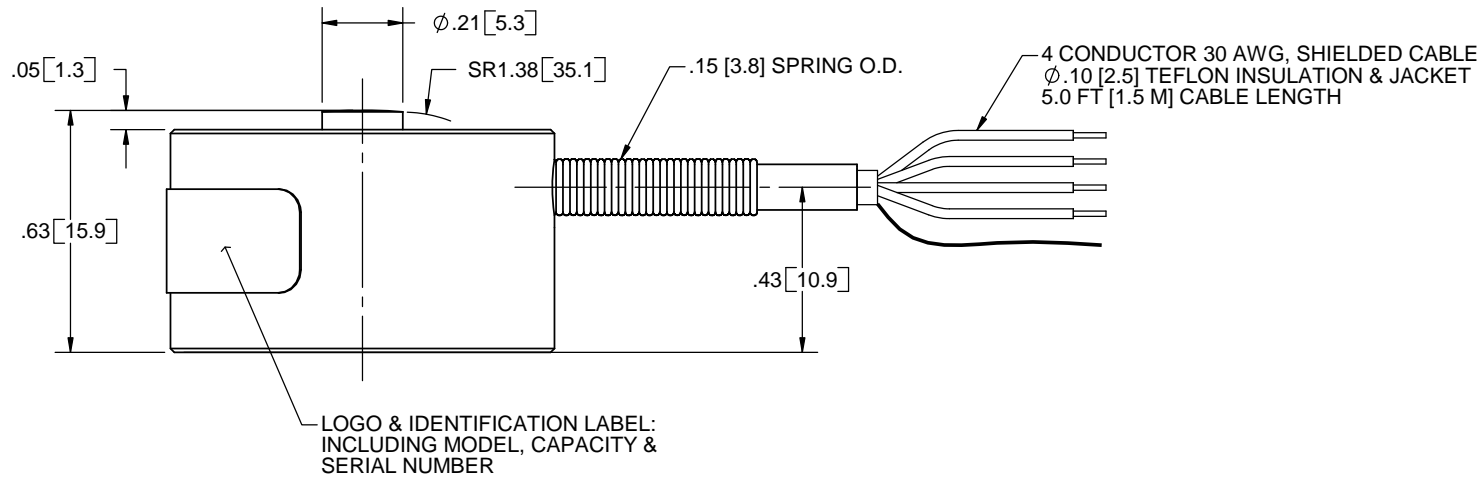


Interface Inc. claims proprietary rights in the information disclosed hereon. This drawing is furnished in confidence on the express understanding that neither it nor any reproduction thereof will be disclosed to others or used for the purpose of manufacture or procurement of the article or part shown hereon without written permission of Interface Inc. The drawing shall remain the property of Interface Inc. and shall be returned upon request by Interface Inc.

81077

REVISIONS

REV	DESCRIPTION	DATE	APPROVED
A	INITIAL RELEASE	06/06/11	
B	SMALLER LABEL, ϕ .10 [2.5] WAS ϕ .19 [4.8]	06/08/12	
C	ADDED $60^\circ \pm 3^\circ$ TO MOUNTING HOLES	10/02/12	
D	REMOVED OUTPUT FROM LABEL DESC	07/29/13	<i>me</i>



COMPRESSION UPSCALE

1. ALL DIMENSIONS ARE IN INCHES & [mm] UNLESS OTHERWISE SPECIFIED
2. DIMENSIONAL TOLERANCE: ± 0.01 [0.3]
3. FLEXURE MATERIAL: STAINLESS STEEL
4. OUTPUT: 2 mV/V

UNLESS OTHERWISE SPECIFIED DIMENSIONS ARE IN INCHES TOLERANCES ARE:		REMOVE BURRS AND SHARP EDGES .02 MAX SURFACE FINISH 63 MICROINCHES		interface ADVANCED FORCE MEASUREMENT 7401 E. BUTHERUS DR. SCOTTSDALE, AZ USA 85260	
ANGLES	$\pm 0^\circ 30'$	CREATOR	DATE	TITLE:	
.XX	$\pm .010$	DESIGNED:	06/02/11	OUTLINE, MODEL	
.XXX	$\pm .005$	DETAILED:	06/02/11	LBM-25, -50, -100	
STD. RADII	.015 - .035	MATERIAL:	WEIGHT:	SIZE:	DWG. NO:
ϕ RUNOUT	.002	FINISH:	OUTPUT:	A	81077
		CAM DATA:		SCALE: 2:1	SHEET 1 OF 1
					REV: D