

### Precision datalogger with probe and ethernet adaptor

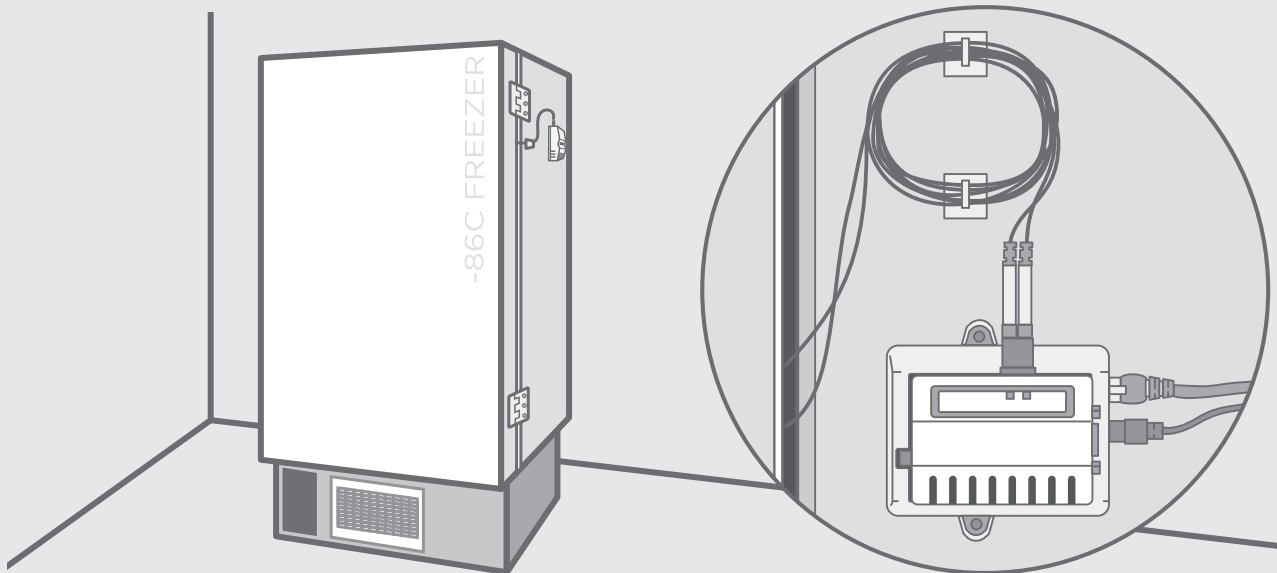


- Compact and self-powered
- Palm-sized
- 10-year battery life
- Thin teflon probe passes through door seal for easy installation
- On-board storage of temperature data
- Provides fail-safe data redundancy

### Install datalogger and probe in freezer or refrigerator in 3 easy steps

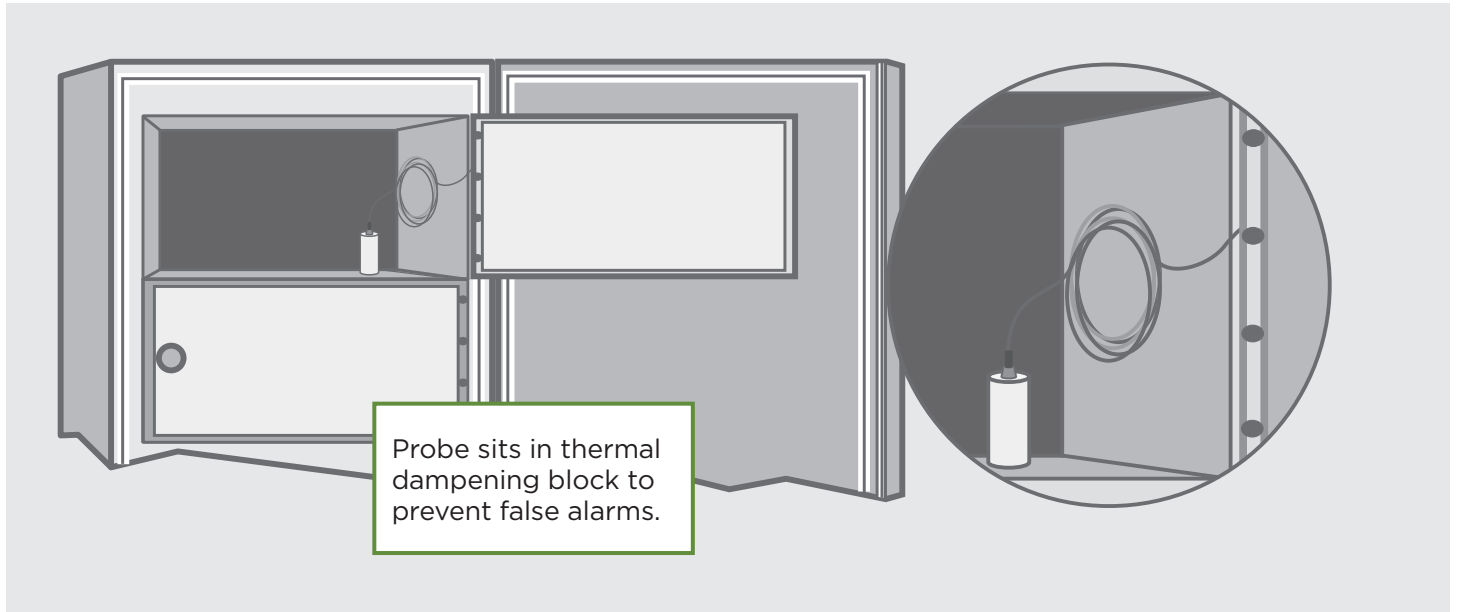
1

Mount datalogger on the wall or back side of freezer



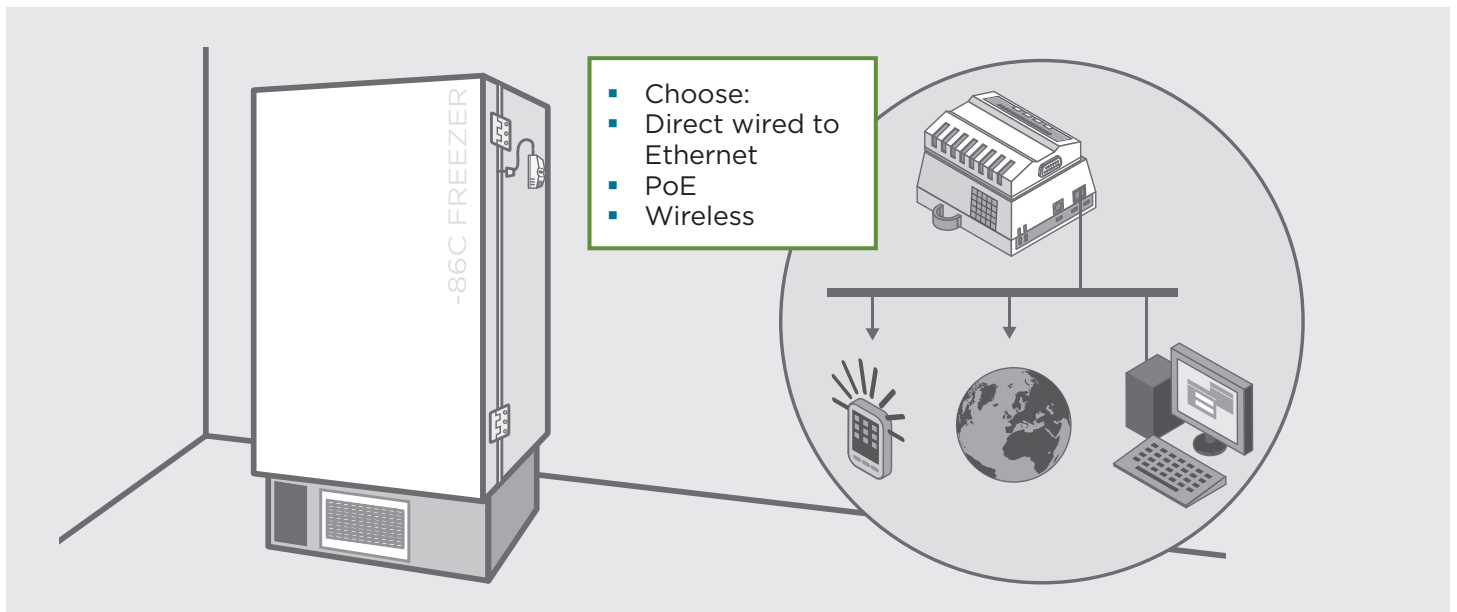
### 2

#### Place probe into refrigerator or freezer



### 3

#### Connect to network



No part of this document may be reproduced in any form or by any means, electronic or mechanical (including photocopying), nor may its contents be communicated to a third party without prior written permission of the copyright holder. The contents are subject to change without prior notice. Please observe that this document does not create any legally binding obligations for Vaisala towards the customer or end user. All legally binding commitments and agreements are included exclusively in the applicable supply contract or Conditions of Sale.

