

WMC MINIATURE SEALED STAINLESS STEEL LOAD CELL (U.S. & METRIC)

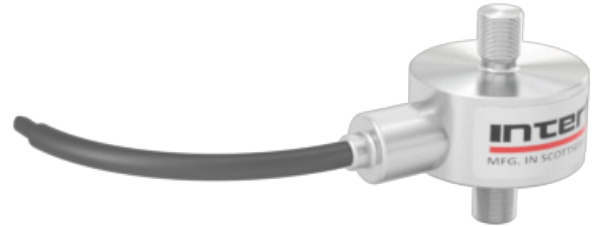
FEATURES & BENEFITS

- Proprietary Interface temperature compensated strain gages
- Tension & compression
- Small size
- Environmentally sealed

SPECIFICATIONS

ACCURACY – (MAX ERROR)		
Nonlinearity – %FS		±0.15
Hysteresis – %FS		±0.15
Nonrepeatability – %RO		±0.05
Creep, in 20 min – %		±0.05
TEMPERATURE		
Compensated Range	°F	+15 to +115
	°C	-10 to +45
Operating Range	°F	-65 to +250
	°C	-54 to +121
Effect on Output – % / deg	°F	±0.002
Effect on Zero – %RO / deg	°F	±0.005
ELECTRICAL		
Rated Output – mV/V (Nominal)		2.0
Zero Balance – %RO		±2.0
Bridge Resistance – Ohm (Nominal)		350
Excitation Voltage – VDC MAX		12.0
Insulation Resistance – Megohm		> 5000
MECHANICAL		
Calibration		T & C
Deflection @ RO	5 (lbf)	0.0012
	22 (N)	0.030
	10 (lbf)	0.0010
	45 (N)	0.025
	25 (lbf)	0.0014
	110 (N)	0.036
	50 (lbf)	0.0010
	220 (N)	0.025
	100 (lbf)	0.0007
	450 (N)	0.018
	250 (lbf)	0.0026
	1100 (N)	0.066
	500 (lbf)	0.0025
	2200 (N)	0.064
Safe Overload – %CAP		150
Weight	lbs	0.05 - 0.12
	g	22.7 - 54.4
Material		Stainless steel

STANDARD CONFIGURATION



Model WMC-100 (Shown)

OPTIONS

- Cable length
- Special calibration
- Standardized output
- Special temperature range
- Custom calibration
- Add connector to cable
- Submersible
- Transducer Electronic Data Sheet (TEDS)

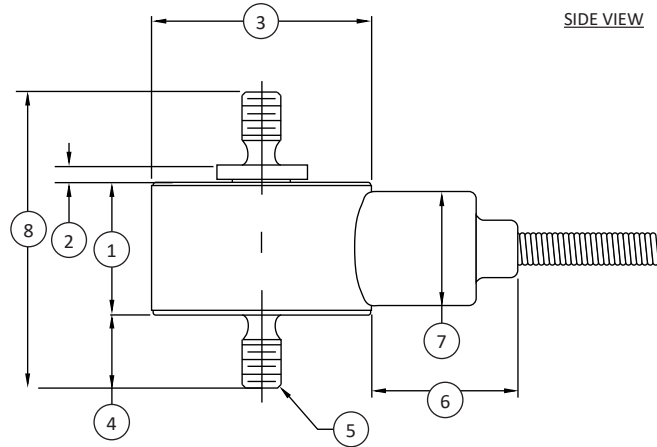
ACCESSORIES

- Instrumentation

CONNECTOR OPTIONS

- 5 ft (1.5 m) integral cable

WMC MINIATURE SEALED STAINLESS STEEL LOAD CELL (U.S. & METRIC)



DIMENSIONS

See Drawing	CAPACITY					
	U.S. (lbf)	Metric (N)	U.S. (lbf)	Metric (N)	U.S. (lbf)	Metric (N)
	5 - 10	22 - 45	25 - 100	110 - 450	250 - 500	1100 - 2200
	in	mm	in	mm	in	mm
(1)	0.45	11.4	0.52	13.2	0.53	13.4
(2)	0.06	1.5	0.03	0.8	0.03	0.8
(3)	Ø0.75	Ø19.1	Ø1.00	Ø25.4	Ø1.00	Ø25.4
(4)	0.25 TYP	6.4 TYP	0.25 TYP	6.4 TYP	0.38 TYP	9.7 TYP
(5)	6-32 UNC M4X0.7 TYP		10-32 UNF M5X0.8 TYP		¼-28 UNF M6X1 TYP	
(6)	0.50	12.7	0.50	12.7	0.50	12.7
(7)	Ø0.39	Ø9.9	Ø0.39	Ø9.9	Ø0.39	Ø9.9
(8)	1.01	25.7	1.05	26.7	1.32	33.5



Edificio Antalia, Albasanz 16, 28037 Madrid
 915 679 700 | grupoalava.com | alava@grupoalava.com
 MADRID - BARCELONA - ZARAGOZA - LISBOA - DALLAS - MIAMI - LOS ANGELES - LIMA

WMC v2.4 04-06-2021

International System of Units (SI) dimensions and capacities are provided for conversion only. Standard products have U.S. capacities and dimensions. SI capacities available upon special request and at an additional cost.