

## WMC MINIATURE SEALED STAINLESS STEEL LOAD CELL (U.S. & METRIC)

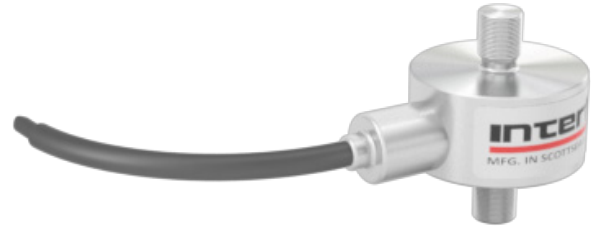
### FEATURES & BENEFITS

- Capacities 1k - 10k lbf (4500 - 45000 N)
- Proprietary Interface temperature compensated strain gages
- Tension & compression
- Small size
- Environmentally sealed

### SPECIFICATIONS

ACCURACY – (MAX ERROR)			
Nonlinearity – %FS		±0.20	
Hysteresis – %FS		±0.20	
Nonrepeatability – %RO		±0.05	
Creep, in 20 min – %		±0.05	
TEMPERATURE			
Compensated Range	°F	+15 to +115	
	°C	-10 to +45	
Operating Range	°F	-65 to +250	
	°C	-54 to +121	
Effect on Output – % / deg	°F	±0.002	
Effect on Zero – %RO / deg	°F	±0.005	
ELECTRICAL			
Rated Output – mV/V (Nominal)		2.0	
Zero Balance – %RO		±2.0	
Bridge Resistance – Ohm (Nominal)		350	
Excitation Voltage – VDC MAX		15.0	
Insulation Resistance – Megohm		> 5000	
MECHANICAL			
Calibration		T & C	
Deflection @ RO	1K (lbf)	in	0.0022
	4.5 (kN)	mm	0.056
	2K, 3K (lbf)	in	0.0020
	9.13 (kN)	mm	0.051
	5K (lbf)	in	0.0017
	22 (kN)	mm	0.043
	7.5K, 10K (lbf)	in	0.0016
	33 (kN)	mm	0.041
	10K (lbf)	in	0.0015
45 (kN)	mm	0.038	
Safe Overload – % CAP		150	
Weight	lbs	0.13 - 0.50	
	g	59.0 - 226.8	
Material		Stainless steel	

### STANDARD CONFIGURATION



Model WMC-5K (Shown)

### OPTIONS

- Cable length
- Custom calibration
- Standardized output
- Add connector to cable
- Transducer Electronic Data Sheet (TEDS)
- Standardized output
- Submersible
- Special temperature range

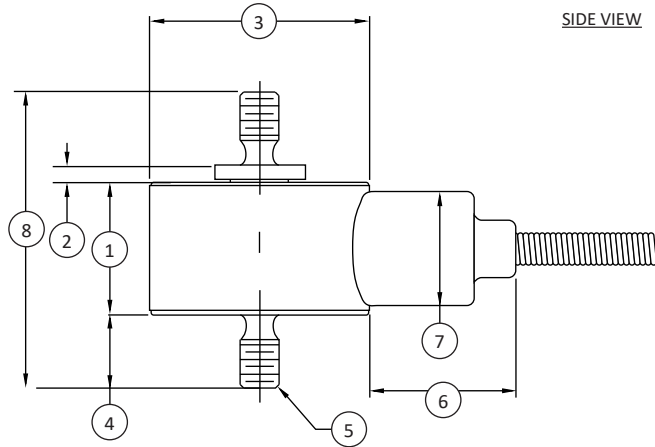
### ACCESSORIES

- Instrumentation

### CONNECTOR OPTIONS

- 5 ft. (1.5m) integral cable

## WMC MINIATURE SEALED STAINLESS STEEL LOAD CELL (U.S. & METRIC)



### DIMENSIONS

See Drawing	CAPACITY							
	U.S. (lbf)	Metric (kN)	U.S. (lbf)	Metric (kN)	U.S. (lbf)	Metric (kN)	U.S. (lbf)	Metric (kN)
	1K	4.5	2K, 3K	9, 13	5K	22	7.5K, 10K	33, 45
	in	mm	in	mm	in	mm	in	mm
(1)	0.53	13.4	0.72	18.3	0.94	23.9	1.09	27.7
(2)	0.03	0.8	0.03	0.8	0.03	0.8	0.03	0.8
(3)	Ø1.00	Ø25.4	Ø1.00	Ø25.4	Ø1.25	Ø31.8	Ø1.38	Ø34.9
(4)	0.38 TYP	9.7 TYP	0.50 TYP	12.7 TYP	0.63 TYP	16.0 TYP	0.88 TYP	22.4 TYP
(5)	¼-28 UNF	M6x1 TYP	¾-24 UNF	M10x1.5 TYP	0.500-20 UNF	M12x1.75 TYP	0.750-16 UNF	M16x2 TYP
(6)	0.50	12.7	0.50	12.7	0.50	12.7	0.50	12.7
(7)	Ø0.39	Ø9.9	Ø0.39	Ø9.9	Ø0.39	Ø9.9	Ø0.39	Ø9.9
(8)	1.32	33.5	1.75	44.5	2.23	56.6	2.88	73.2

International System of Units (SI) dimensions and capacities are provided for conversion only. Standard products have U.S. capacities and dimensions. SI capacities available upon special request and at an additional cost.



Edificio Antalia, Albasanz 16, 28037 Madrid  
 915 679 700 | grupoalava.com | alava@grupoalava.com  
 MADRID - BARCELONA - ZARAGOZA - LISBOA - DALLAS - MIAMI - LOS ANGELES - LIMA

International System of Units (SI) dimensions and capacities are provided for conversion only. Standard products have U.S. capacities and dimensions. SI capacities available upon special request and at an additional cost.