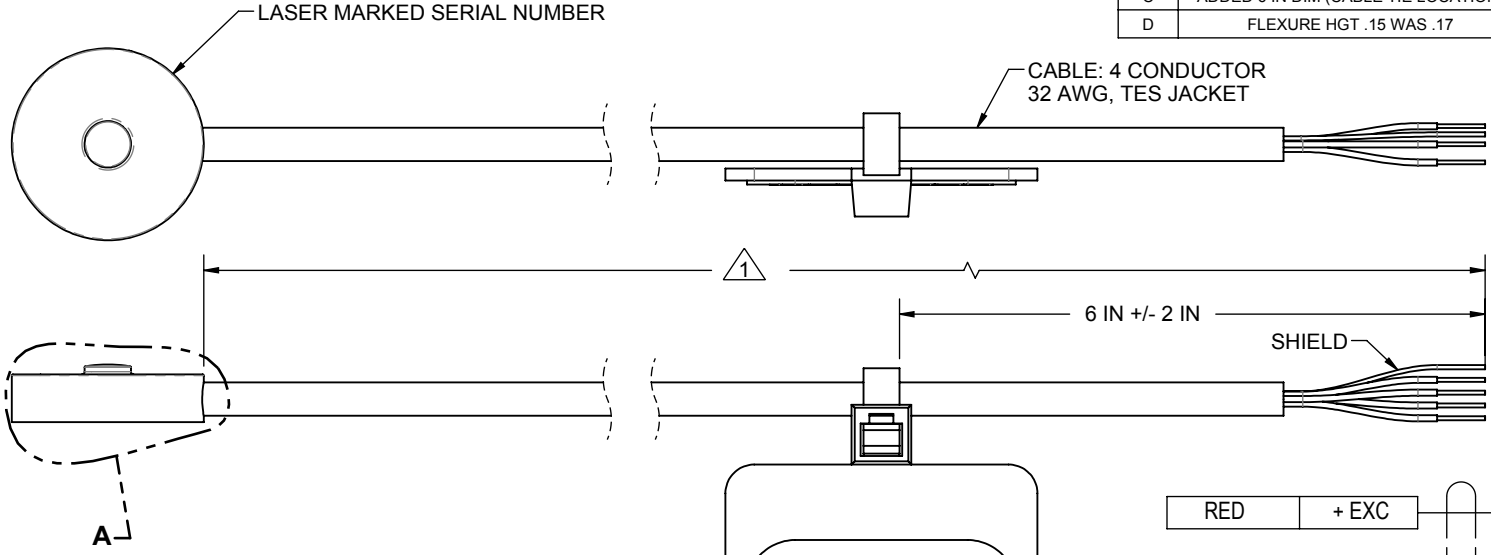


LOAD CELL CHARACTERISTICS	
CAPACITY	100, 250 (lb)

Interface Inc. claims proprietary rights in the information disclosed herein. This drawing is furnished in confidence on the express understanding that neither it nor any reproduction thereof will be disclosed to others or used for the purpose of manufacture or procurement of the article or part shown hereon without written permission of Interface Inc. The drawing shall remain the property of Interface Inc. and shall be returned upon request by Interface Inc.

82825

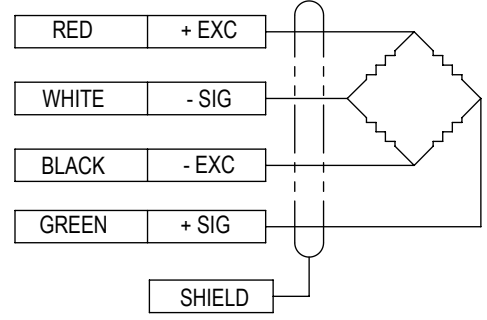
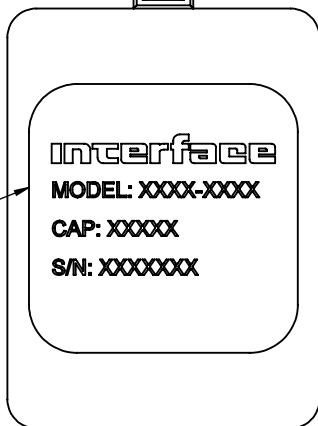
REVISIONS			
REV.	DESCRIPTION	DATE	APPROVED
B	REMOVED COMP BOARD, ADDED CABLE TIE & LABEL	11/20/2019	RMP
C	ADDED 6 IN DIM (CABLE TIE LOCATION)	6/4/2020	RMP
D	FLEXURE HGT .15 WAS .17	9/02/2020	JR



**Álava Ingenieros**  
GRUPO ALAVA

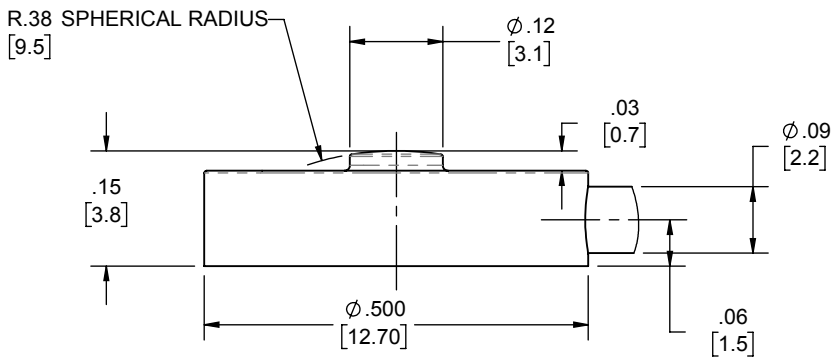
Edificio Antalia, Albasanz 16, 28037 Madrid  
915 679 700 | grupoalava.com | alava@grupoalava.com  
MADRID - BARCELONA - ZARAGOZA - LISBOA - DALLAS - MIAMI - LOS ANGELES - LIMA

IDENTIFICATION LABEL INCLUDING: MODEL, CAPACITY & SERIAL NUMBER



COMPRESSION UPSCALE

- △ 2 STAINLESS STEEL FLEXURE
- △ 1 STANDARD CABLE LENGTH IS 5 FT [1.5 M]. NON-STANDARD CABLE LENGTH PER OPTION CODE.



**DETAIL A**  
SCALE 4 : 1

UNLESS OTHERWISE SPECIFIED DIMENSIONS ARE IN INCHES [mm]  
TOLERANCES ARE:  
ANGLES ± 0° 30'  
.XX ± .01 [0.25]  
.XXX ± .005 [0.13]

CREATOR	DATE
DESIGNED: NICK S.	09/24/19
DETAILED: DAVID C.	09/30/19
WEIGHT: (APPROX) 0.01 (lbs)	

**Interface** 7418 E. HELM DRIVE  
FORCE MEASUREMENT SOLUTIONS, SCOTTSDALE, AZ 85260 USA

TITLE: **OUTLINE MODEL: LBSU-100, -250**

SIZE: A	DWG. NO: 82825	REV: D
SCALE: 2:1	SHEET 1 OF 1	