

LBM COMPRESSION LOAD BUTTON (U.S. & METRIC)

FEATURES & BENEFITS

- Capacities from 25 to 50K lbf (0.11 to 222.4 kN)
- Temperature compensated
- Integral load button
- Small diameter
- Environmentally sealed

SPECIFICATIONS

ACCURACY – (MAX ERROR)		
Nonlinearity – %FS		±0.5
Hysteresis – %FS		±0.3
Nonrepeatability – %RO		±0.10
TEMPERATURE		
Compensated Range	°F	+70 to +170
	°C	+21 to +77
Operating Range	°F	-65 to +200
	°C	-54 to +93
Effect on Zero – %RO / deg	°F	±0.005
Effect on Output – % / deg	°F	±0.005
Zero Balance – %FS		±2.0
ELECTRICAL		
Rated Output – mV/V (nominal)		2.0
Bridge Resistance – Ohm (nominal)		350
Excitation Voltage – VDC MAX		10
MECHANICAL		
Calibration		Comp.
Deflection		0.001-0.003
Safe Overload – %CAP		150
Ultimate Overload % of CAP Cable		300
Material		Stainless steel

STANDARD CONFIGURATION



Model LBM-5K (Shown)

OPTIONS

- Custom calibration
- Standardized output
- Special temperature range
- Cable length
- Add connector to cable
- Transducer Electronic Data Sheet (TEDS)

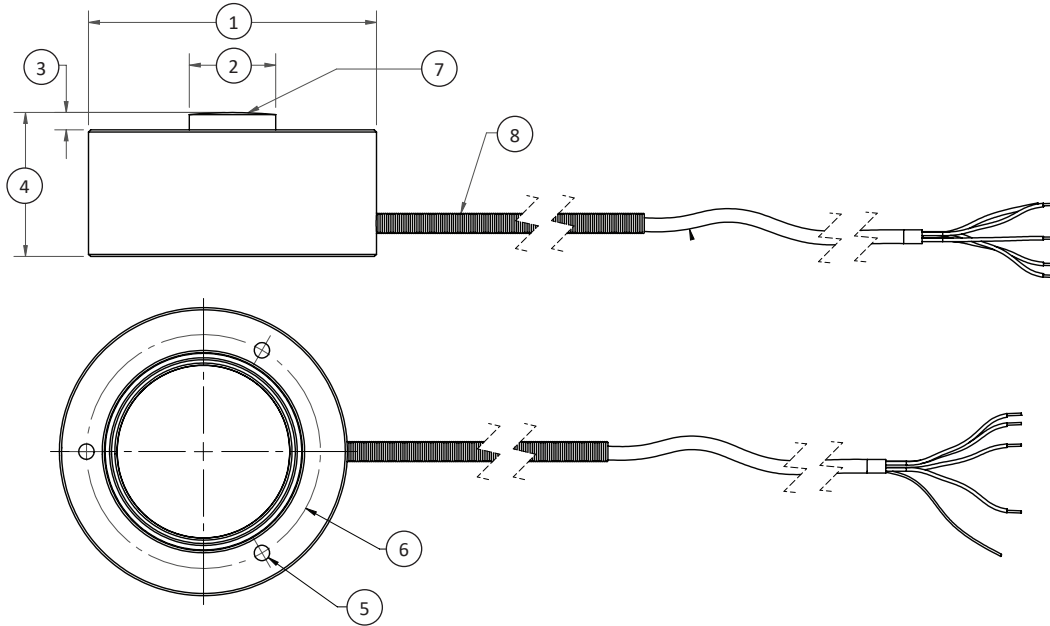
ACCESSORIES

- Instrumentation

CONNECTOR OPTIONS

- 5 ft (1.5 m) integral cable (LBM)

LBM COMPRESSION LOAD BUTTON (U.S. & METRIC)



SIDE VIEW

BOTTOM VIEW

DIMENSIONS

See Drawing	CAPACITY									
	U.S. (lbf)	Metric (kN)	U.S. (lbf)	Metric (kN)	U.S. (lbf)	Metric (kN)	U.S. (lbf)	Metric (kN)	U.S. (lbf)	Metric (kN)
	in	mm	in	mm	in	mm	in	mm	in	mm
(1)	25, 50, 100	0.11, 0.22, 0.44	250, 500, 1K, 2K	1.11, 2.22, 4.44, 8.89	5K, 7.5K, 10K	22.2, 33.3, 44.4	20K	88.9	50K	222.4
(2)	Ø1.00	Ø25.4	Ø1.25	Ø31.8	Ø1.50	Ø38.1	Ø2.00	Ø50.8	Ø3.00	Ø76.2
(3)	Ø0.21	Ø5.3	Ø0.32	Ø8.1	Ø0.43	Ø10.9	Ø0.60	Ø15.2	Ø0.78	Ø19.8
(4)	0.05	1.3	0.07	1.8	0.08	1.9	0.12	3.0	0.18	4.6
(5)	0.63	15.9	0.39	9.9	0.63	15.9	1.00	25.4	1.50	38.1
(6)	3X #4-40 UNC-2B I0.21 EQ SP	3X #4-40 UNC-2B I5.3 EQ SP	3X #6-32 UNC-2B I0.25 EQ SP	3X #6-32 UNC-2B I6.3 EQ SP	3X #6-32 UNC-2B I0.25 EQ SP	3X #6-32 UNC-2B I6.3 EQ SP	3X #6-32 UNC-2B I0.25 EQ SP	3X #6-32 UNC-2B I6.3 EQ SP	3X #6-32 UNC I0.26 EQ SP	3X #6-32 UNC I6.6 EQ SP
(7)	Ø0.75	Ø19.1	Ø1.00	Ø25.4	Ø1.25	Ø31.8	Ø1.625	Ø41.28	Ø2.375	Ø60.33
(8)	SR1.38	SR35.1	SR1.50	SR38.1	SR	SR	SR	SR	SR	SR
(8)	Strain Relief Spring									

International System of Units (SI) dimensions and capacities are provided for conversion only. Standard products have U.S. capacities and dimensions. SI capacities available upon special request and at an additional cost.



Edificio Antelia, Albasanz 16, 28037 Madrid
915 679 700 | grupoalava.com | alava@grupoalava.com
BARCELONA · ZARAGOZA · LISBONA · DALLAS · NYNOR · LOS ANGELES · LIMA