

**LOAD CELL CHARACTERISTICS**

CAPACITY	5K, 10K (lbf)
----------	---------------

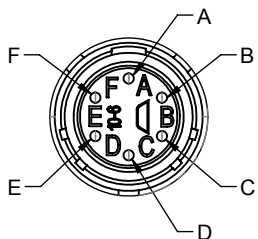
Interface Inc. claims proprietary rights in the information disclosed herein. This drawing is furnished in confidence on the express understanding that neither it nor any reproduction thereof will be disclosed to others or used for the purpose of manufacture or procurement of the article or part shown herein without written permission of Interface Inc. The drawing shall remain the property of Interface Inc. and shall be returned upon request by Interface Inc.

**81961**

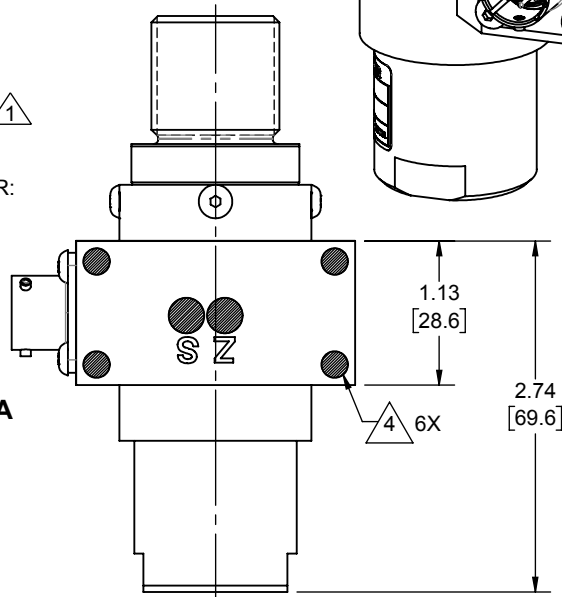
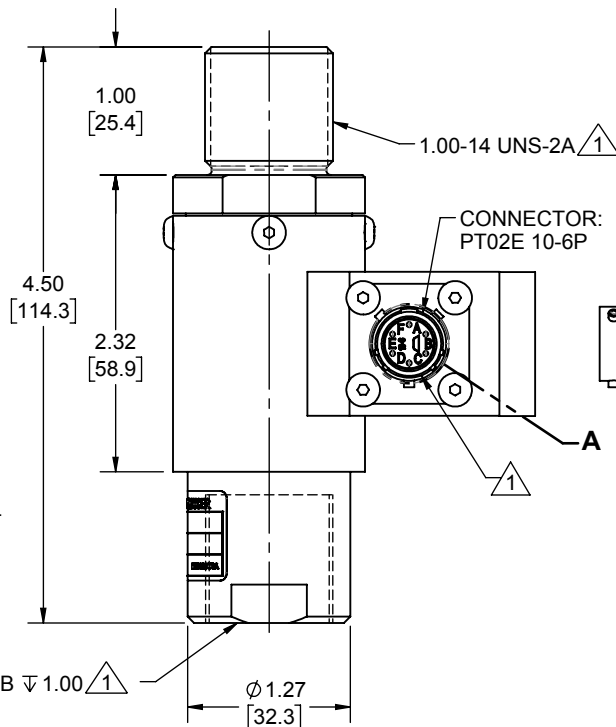
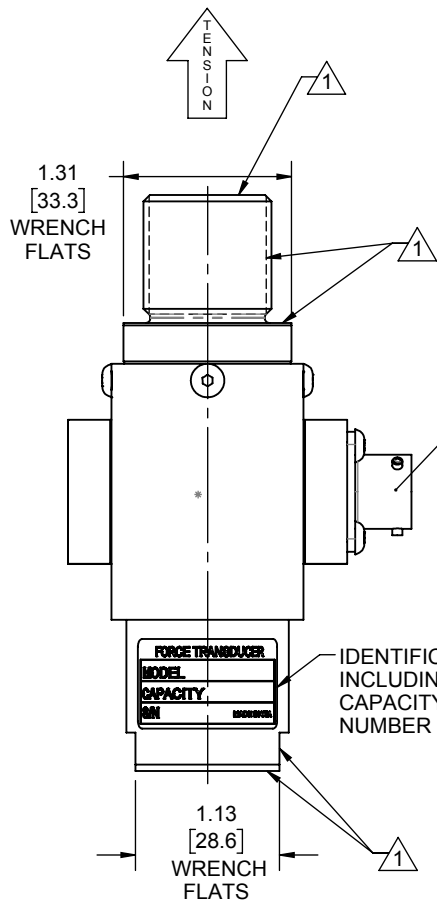
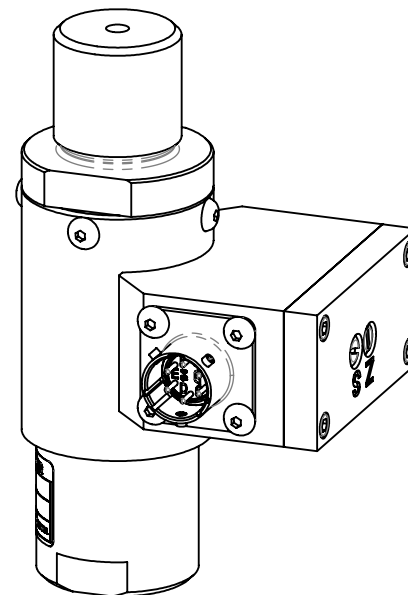
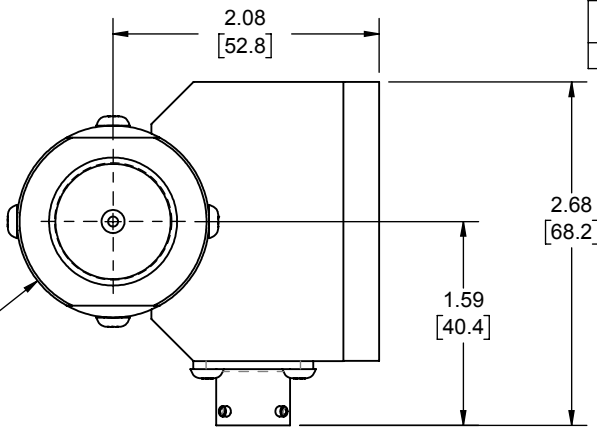
**REVISIONS**

REV.	DESCRIPTION	DATE	APPROVED
A	INITIAL RELEASE	2/23/2017	DLC
B	REPLACED NOTES 3 & 4 (AND ASSOCIATED VIEW REFERENCES); MOVED DATA LABEL	3/15/2017	BB
C	ADDED 5K CAPACITY	08/13/2018	CS

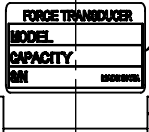
CONNECTOR PINOUT	
PIN	FUNCTION
A	+ SUPPLY
B	SUPPLY COMMON
C	SIGNAL COMMON
D	+ SIGNAL (10V)
E	SHUNT CALIBRATION
F	SHUNT CALIBRATION



**DETAIL A  
SCALE 4 : 3**



IDENTIFICATION LABEL INCLUDING: MODEL, CAPACITY, SERIAL NUMBER & OUTPUT



- 1 NO PAINT.
- 2 FLEXURE MATERIAL: STAINLESS STEEL
- 3 FINISH: SILVER (23152) ALL OVER EXCEPT WHERE NOTED
- 4 SCREWS COVERED WITH RTV.



UNLESS OTHERWISE SPECIFIED DIMENSIONS ARE IN INCHES [mm]  
TOLERANCES ARE:  
ANGLES ± 0° 30'  
.XX ± .01 [0.25]  
.XXX ± .005 [0.13]

CREATOR	DATE
DESIGNED: CS	02/15/17
DETAILED: DAVID C.	2/15/2017
WEIGHT: (APPROX) 1.22 (lbs)	



TITLE: <b>OUTLINE MODEL: REC OPT-1010</b>		REV: <b>C</b>
SIZE: <b>A</b>	DWG. NO: <b>81961</b>	
SCALE: 2:3	SHEET 1 OF 1	