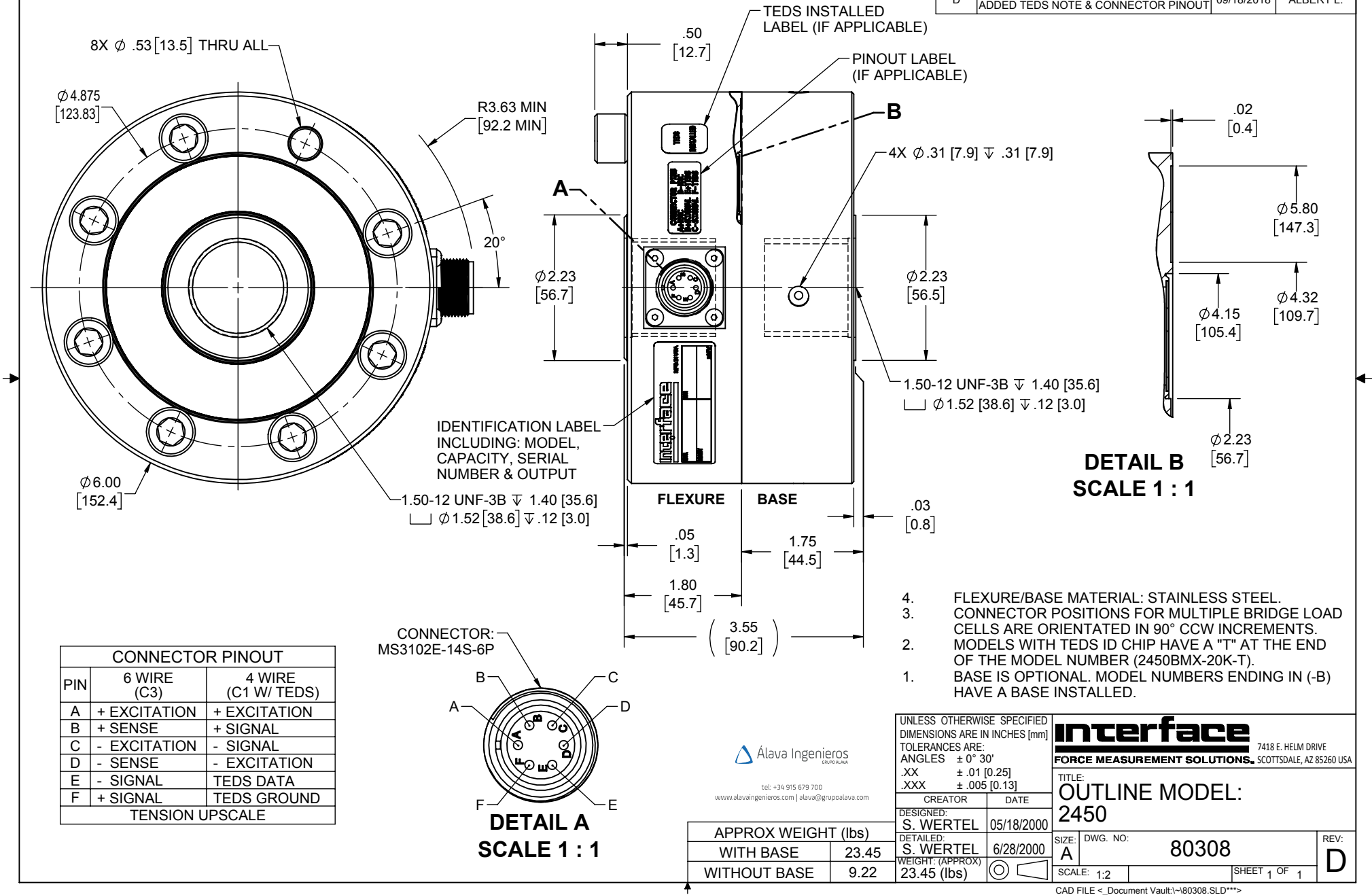


LOAD CELL CHARACTERISTICS	
CAPACITY	20K (lbf)

Interface Inc. claims proprietary rights in the information disclosed herein. This drawing is furnished in confidence on the express understanding that neither it nor any reproduction thereof will be disclosed to others or used for the purpose of manufacture or procurement of the article or part shown herein without written permission of Interface Inc. The drawing shall remain the property of Interface Inc. and shall be returned upon request by Interface Inc.

80308			
REVISIONS			
REV.	DESCRIPTION	DATE	APPROVED
A	INITIAL RELEASE	07/03/00	
B	CORRECTED CENTER HOLE CALLOUT	10/04/00	
C	ADDED BASE B320-1, NOTES 3 & 4	10/17/00	JOE P.
D	REDRAWN, UPDATED TO CURRENT STD'S ADDED TEDS NOTE & CONNECTOR PINOUT	09/18/2018	ALBERT L.



CONNECTOR PINOUT		
PIN	6 WIRE (C3)	4 WIRE (C1 W/ TEDS)
A	+ EXCITATION	+ EXCITATION
B	+ SENSE	+ SIGNAL
C	- EXCITATION	- SIGNAL
D	- SENSE	- EXCITATION
E	- SIGNAL	TEDS DATA
F	+ SIGNAL	TEDS GROUND
TENSION UPSCALE		

Alava Ingenieros  
tel: +34 915 679 700  
www.alavaingenieros.com | alava@gruposalava.com

APPROX WEIGHT (lbs)	
WITH BASE	23.45
WITHOUT BASE	9.22

UNLESS OTHERWISE SPECIFIED DIMENSIONS ARE IN INCHES [mm] TOLERANCES ARE: ANGLES $\pm$ 0° 30' .XX $\pm$ .01 [0.25] .XXX $\pm$ .005 [0.13]	
CREATOR	DATE
DESIGNED: S. WERTEL	05/18/2000
DETAILED: S. WERTEL	6/28/2000
WEIGHT: (APPROX) 23.45 (lbs)	