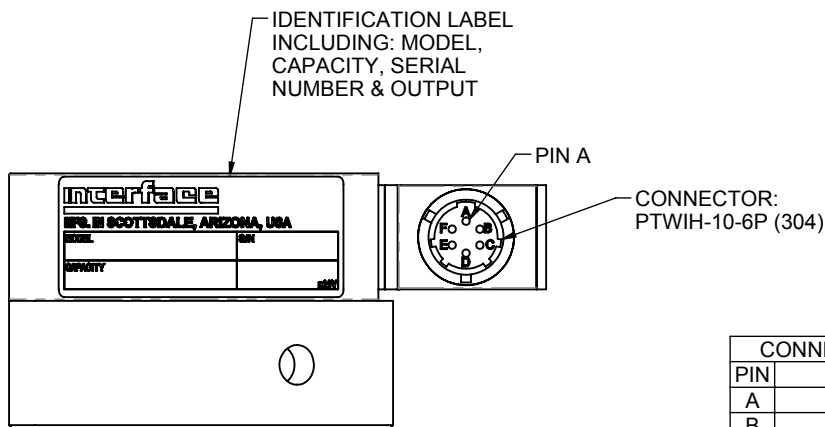
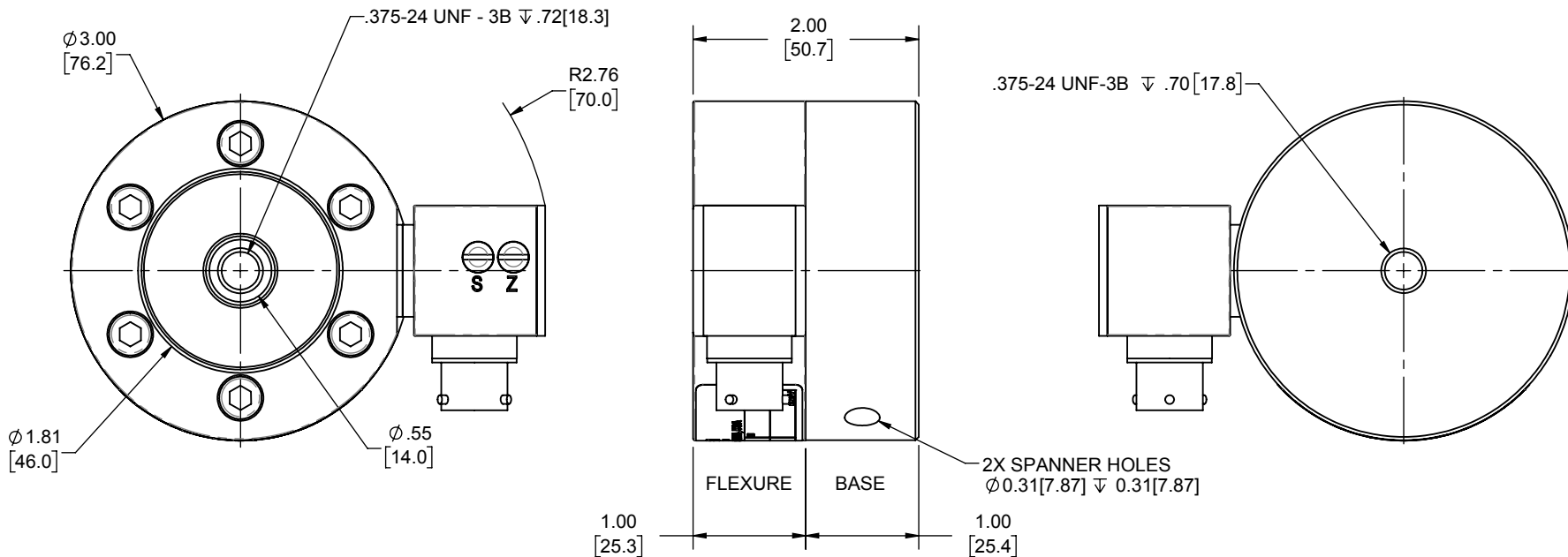


LOAD CELL CHARACTERISTICS	
CAPACITY	50, 100, 250, 500, 1000 (lbf)

Interface Inc. claims proprietary rights in the information disclosed herein. This drawing is furnished in confidence on the express understanding that neither it nor any reproduction thereof will be disclosed to others or used for the purpose of manufacture or procurement of the article or part shown hereon without written permission of Interface Inc. The drawing shall remain the property of Interface Inc. and shall be returned upon request by Interface Inc.

80502			
REVISIONS			
REV.	DESCRIPTION	DATE	APPROVED
A	INITIAL RELEASE	11/12/04	
B	ADDED 50, 100, 250, 1000 (lbf)	02/01/05	
C	REPLACED DOGHOUSE (REMOVED S/Z LABEL); UPDATED TO CURRENT STDS	5/24/2017	CS



1. BASE IS OPTIONAL. MODEL NUMBERS ENDING IN (-B) HAVE A BASE INSTALLED.

CONNECTOR PINOUT	
PIN	FUNCTION
A	+ SUPPLY
B	N/C
C	N/C
D	+ OUTPUT (4-20 mA)
E	CASE GROUND
F	N/C
TENSION UPSCALE	

UNLESS OTHERWISE SPECIFIED
DIMENSIONS ARE IN INCHES [mm]
TOLERANCES ARE:
ANGLES $\pm 0^\circ 30'$
.XX $\pm .01$ [0.25]
.XXX $\pm .005$ [0.13]

CREATOR	DATE
DESIGNED: JOE G.	10/26/04
DETAILED: J.E.P.	10/29/04
WEIGHT: (APPROX) 3.4 (lbs)	

interface
ADVANCED FORCE MEASUREMENT
7401 E. BUTHERUS DR. SCOTTSDALE, AZ USA 85260

TITLE:
OUTLINE MODEL: 2424

SIZE:	DWG. NO:	REV:
A	80502	C
SCALE: 2:3	SHEET 1 OF 1	