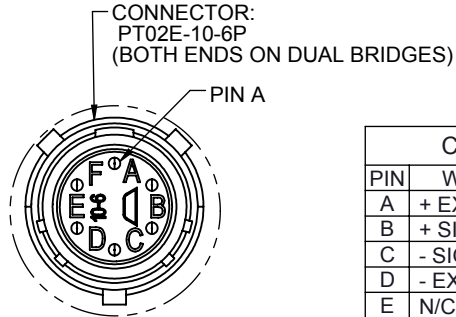
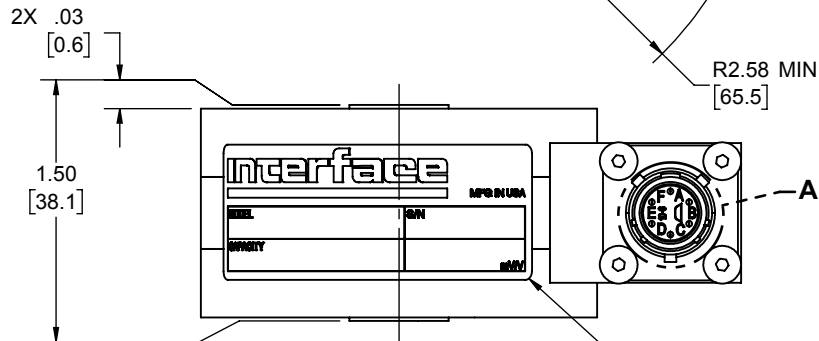


LOAD CELL CHARACTERISTICS			
		US CAPACITIES	SI CAPACITIES
#	CAPACITY	25, 50, 100, 200, 300 (lbf)	125, 250, 500, 1000, 1500 (N)
1	THREAD	0.250-28 UNF ▽ 0.25	M6 X 1-6H ▽ 6.4

Interface Inc. claims proprietary rights in the information disclosed hereon. This drawing is furnished in confidence on the express understanding that neither it nor any reproduction thereof will be disclosed to others or used for the purpose of manufacture or procurement of the article or part shown hereon without written permission of Interface Inc. The drawing shall remain the property of Interface Inc. and shall be returned upon request by Interface Inc.

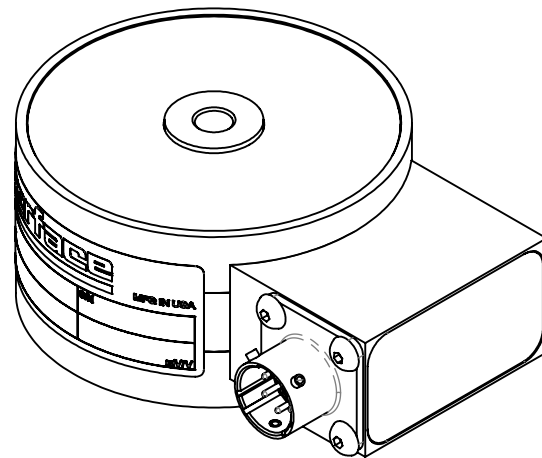
REVISIONS			
REV.	DESCRIPTION	DATE	APPROVED
A	ADDED 25 (lbF) TO CAPACITY	03/23/98	
B	ROTATE MTG HOLES 22.5°	01/27/00	
C	ADD 125 (N), REMOVE Ø.503	02/09/15	LCG
D	LABEL P/N AND GRAPHIC ADDED, BRACKETS WERE PARENTHESIS	11/23/15	LCG
E	UPDATED TO CURRENT STANDARDS	10/6/2016	DLC
F	ADDED CONNECTOR PINOUT TABLE, REMOVED BRIDGE DIAGRAM	4/2/2019	ALBERT L.

REVISIONS			
REV.	DESCRIPTION	DATE	APPROVED
A	ADDED 25 (lbF) TO CAPACITY	03/23/98	
B	ROTATE MTG HOLES 22.5°	01/27/00	
C	ADD 125 (N), REMOVE Ø.503	02/09/15	LCG
D	LABEL P/N AND GRAPHIC ADDED, BRACKETS WERE PARENTHESIS	11/23/15	LCG
E	UPDATED TO CURRENT STANDARDS	10/6/2016	DLC
F	ADDED CONNECTOR PINOUT TABLE, REMOVED BRIDGE DIAGRAM	4/2/2019	ALBERT L.

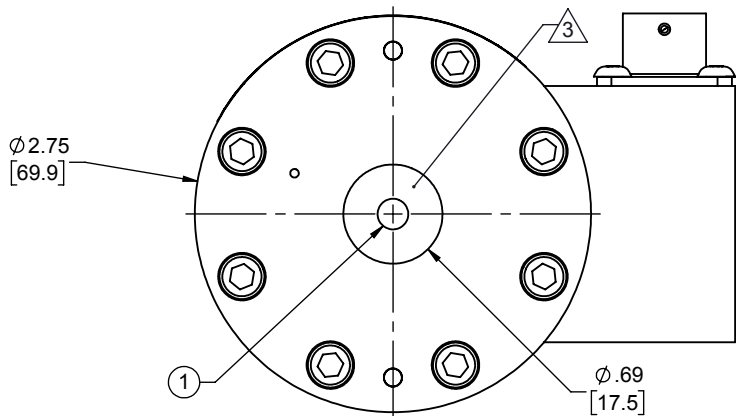


DETAIL A
SCALE 6 : 4

CONNECTOR PINOUT		
PIN	W/O TEDS	WITH TEDS
A	+ EXCITATION	+ EXCITATION
B	+ SIGNAL	+ SIGNAL
C	- SIGNAL	- SIGNAL
D	- EXCITATION	- EXCITATION
E	N/C	TEDS DATA
F	N/C	TEDS GROUND
TENSION UPSCALE		




3. DO NOT PAINT.
2. PAINT INTERFACE BLUE.
1. MODELS WITH TEDS ID CHIP HAVE A "T" AT THE END OF THE MODEL NUMBER (1500ASK-125N-T).



 **Álava Ingenieros**
GRUPO ÁLAVA

tel: +34 915 679 700
www.alavaingenieros.com | alava@grupoalava.com

UNLESS OTHERWISE SPECIFIED
DIMENSIONS ARE IN INCHES [mm]
TOLERANCES ARE:
ANGLES $\pm 0^{\circ} 30'$
.XX $\pm .01$ [0.25]
.XXX $\pm .005$ [0.13]

CREATOR	DATE
DESIGNED: JEP	03/23/98
DETAILED: JEP	3/23/1998
WEIGHT: (APPROX) 0.8 (lbs)	

interface
FORCE MEASUREMENT SOLUTIONS. 7418 E. HELM DRIVE
SCOTTSDALE, AZ 85260 USA

TITLE: **OUTLINE MODEL: 1500**

SIZE: A	DWG. NO: 80183
------------	-------------------

SCALE: 3:4	SHEET 1 OF 1
------------	--------------

REV:
F