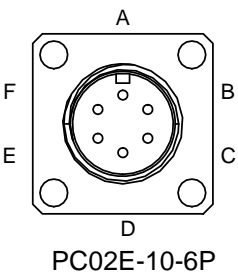
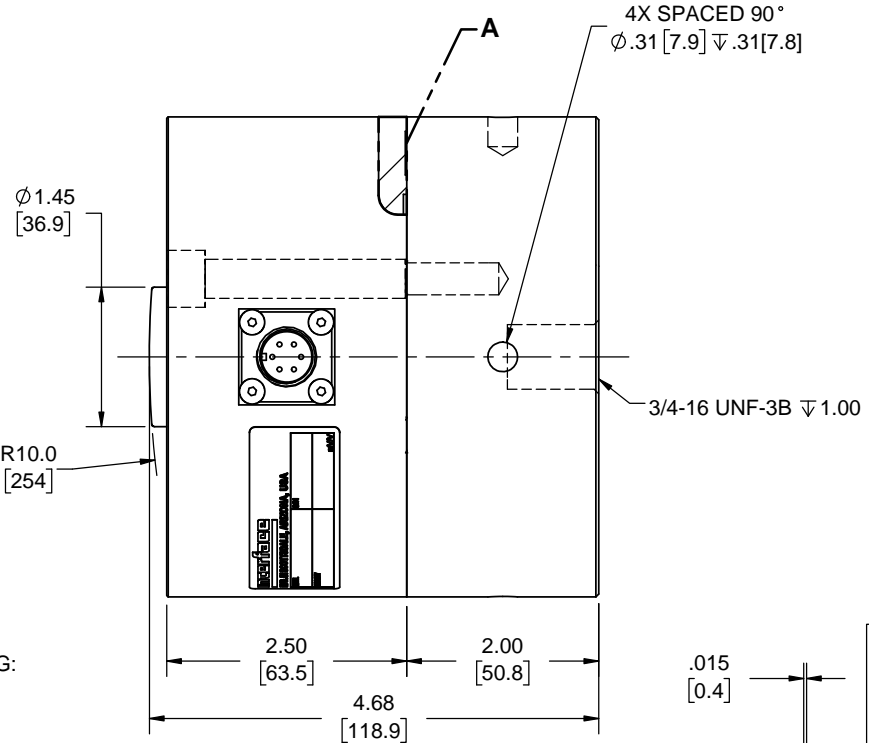
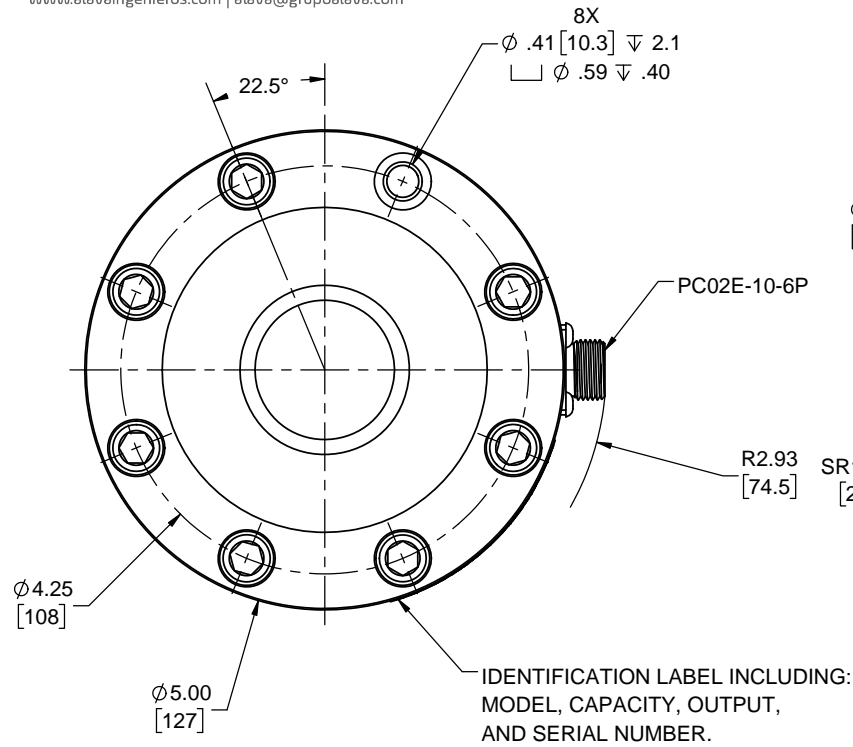


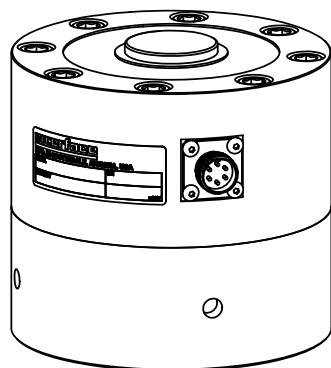
Interface Inc. claims proprietary rights in the information disclosed herein. This drawing is furnished in confidence on the express understanding that neither it nor any reproduction thereof will be disclosed to others or used for the purpose of manufacture or procurement of the article or part shown hereon without written permission of Interface Inc. The drawing shall remain the property of Interface Inc. and shall be returned upon request by Interface Inc.

REVISIONS

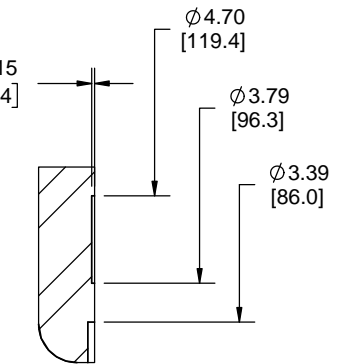
REV.	DESCRIPTION	DATE	APPROVED
A	INITIAL RELEASE	01/30/12	Me
B	ADDED BASE	7/14/2016	DLC



CONNECTOR PINOUT	
PIN	FUNCTION
A	+ EXCITATION
B	+ SIGNAL
C	- SIGNAL
D	- EXCITATION
E	N/C
F	N/C
COMPRESSION UPSCALE	



FLEXURE BASE



DETAIL A  
SCALE 1 : 1

1. BASE IS OPTIONAL, MODEL NUMBERS ENDING IN -B HAVE A BASE INSTALLED.
2. COMPRESSION UPSCALE.
3. BLUE PAINT.
4. CONNECTOR POSITION FOR MULTIPLE BRIDGE LOAD CELLS ARE ORIENTATED IN 90° CCW INCREMENTS.

UNLESS OTHERWISE SPECIFIED DIMENSIONS ARE IN INCHES [mm]  
 TOLERANCES ARE:  
 ANGLES ± 0° 30'  
 .XX ± .01 [0.25]  
 .XXX ± .005 [0.13]

CREATOR	DATE
DESIGNED: KEN V.	01/27/12
DETAILED: RMP	6/30/16
WEIGHT: (APPROX) 21.971 (lbs)	

**interface**  
 ADVANCED FORCE MEASUREMENT  
 7401 E. BUTHERUS DR. SCOTTSDALE, AZ USA 85260

TITLE:  
**OUTLINE MODEL 1331EGJ-100K**

SIZE: A DWG. NO: **81143** REV: **B**

SCALE: 1:2 SHEET 1 OF 1