

1200 STANDARD HIGH CAPACITY LOAD CELL (U.S. & METRIC)

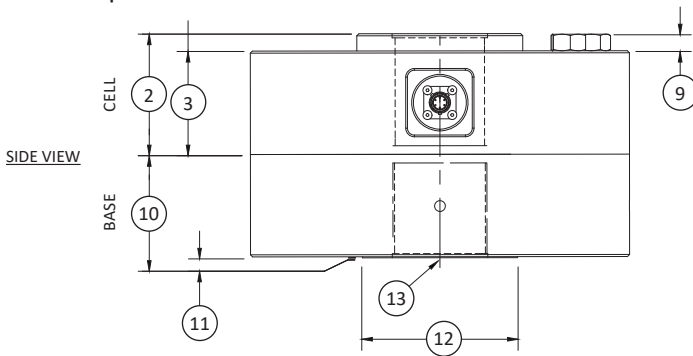
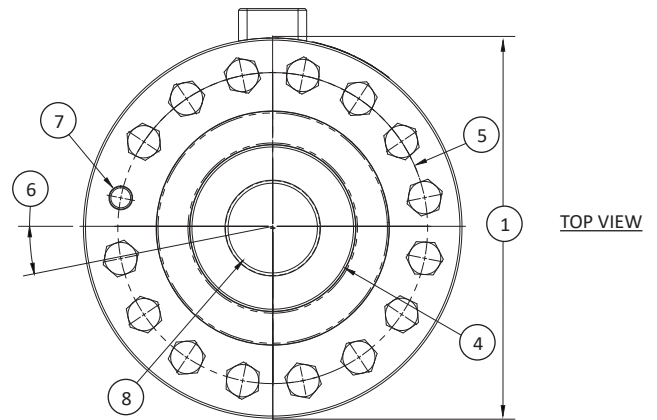
FEATURES & BENEFITS

- Capacities from 200K to 2000K lbf (900 to 9000 kN)
- Proprietary Interface temperature
- Compensated strain gages
- Performance to 0.07%
- High output – to 4 mV/V
- Eccentric load compensated
- 0.0008%/°F (0.0015%/°C) temp. effect on output
- Low deflection
- Shunt calibration
- Barometric compensation
- Tension and compression
- Compact size

STANDARD CONFIGURATION



Model 1240ACK-200K (shown)



DIMENSIONS

See Drawing	MODEL											
	1240		1244		1252		1260		1280		1290	
	CAPACITY											
	U.S. (lbf)	Metric (kN)	U.S. (lbf)	Metric (kN)	U.S. (lbf)	Metric (kN)	U.S. (lbf)	Metric (kN)	U.S. (lbf)	Metric (kN)	U.S. (lbf)	Metric (kN)
	200K	900	270K	1200	400K	1800	600K	2700	1000K	4500	2000K	9000
	in	mm	in	mm	in	mm	in	mm	in	mm	in	mm
(1)	Ø11.0	Ø279.0	Ø11.0	Ø279.0	Ø12.0	Ø304.8	Ø15.5	Ø393.7	Ø20.50	Ø520.7	Ø26.00	Ø660.4
(2)	3.50	88.9	4.00	101.6	4.50	114.3	5.50	139.7	6.25	158.8	7.75	196.9
(3)	3.00	76.2	3.25	82.6	4.25	108.0	5.00	127.0	6.00	152.4	7.50	190.5
(4)	Ø4.81	Ø122.2	Ø4.81	Ø122.2	Ø6.18	Ø156.8	Ø7.73	Ø196.3	Ø10.55	Ø267.9	Ø13.79	Ø350.3
(5)	Ø9.00	Ø228.6	Ø8.75	Ø222.2	Ø9.875	Ø250.83	Ø12.68	Ø322.1	Ø16.5	Ø419.1	Ø20.50	Ø520.7
(6)	11.25°	11.25°	11.25°	11.25°	9.00°	9.00°	7.50°	7.50°	6.43°	6.43°	5.63°	5.63°
(7)	Ø0.65	Ø16.5	Ø0.79	20.1	Ø0.827	Ø21.01	Ø0.94	Ø23.9	Ø1.06	Ø27.0	Ø1.31	Ø33.3
	16 places		16 places		20 places		24 places		28 places		32 places	
(8)	2 ¾-8 UN-3B ↓ 2.75	M72 X 2-4H ↓ 70	2 ¾-8 UN-3B ↓ 3.75	M72 X 2-4H ↓ 95.3	3 ½-8 UN-3B ↓ 4.13	M90 X 3-4H ↓ 104.9	4 ¼-8 UN-3B ↓ 4.25	M120 X 4-4H ↓ 108	6.00-8 UN-3B ↓ 5.63	M150 X 4-4H ↓ 143	8.00-8 UN-3B ↓ 7.00	M200 X 4-4H ↓ 178
(9)	0.50	12.7	0.58	14.7	0.59	20.0	0.69	12.5	1.00	25.4	1.25	31.3
(10)	3.00	76.2	4.00	101.6	4.50	114.3	5.00	127.0	7.00	177.8	9.00	228.6
(11)	0.03	0.80	0.03	0.80	0.03	0.80	0.03	0.80	0.10	2.5	0.10	2.5
(12)	Ø4.50	Ø114.3	Ø4.50	Ø114.3	Ø6.00	Ø152.4	Ø7.75	Ø196.9	Ø10.55	Ø267.9	Ø14.00	Ø355.6
(13)	2 ¾-8 UNF-3B ↓ 2.75	M72 X 2-4H ↓ 69.8	2 ¾-8 UNF-3B ↓ 2.75	M72 X 2-4H ↓ 69.8	3 ½-8 UN-3B ↓ 3.75	M90 X 3-4H ↓ 95.3	4 ¼-8 UN-3B ↓ 4.25	M120 X 4-4H ↓ 108	6.00-8 UN-3B ↓ 6.38	M150 X 4-4H ↓ 162	8.00-8 UN-3B ↓ 7.25	M200 X 4-4H ↓ 184

1200HC V2.3 01-27-2021

1200 STANDARD HIGH CAPACITY LOAD CELL (U.S. & METRIC)

SPECIFICATIONS

PARAMETERS		MODEL					
		1240	1244	1252	1260	1280	1290
Measuring Range	U.S. (lbf)	200K	270K	400K	600K	1000K	2000K
	Metric (kN)	900	1200	1800	2700	4500	9000
CAPACITY							
ACCURACY – (MAX ERROR)							
Static Error Band – %FS		±0.07	±0.07	±0.10	±0.12	±0.15	±0.20
Nonlinearity – %FS		±0.07	±0.08	±0.10	±0.12	±0.15	±0.20
Hysteresis – %FS		±0.07	±0.08	±0.10	±0.12	±0.15	±0.20
Nonrepeatability – %RO		±0.01	±0.02	±0.02	±0.02	±0.02	±0.02
Creep, in 20 min – %		±0.025	±0.025	±0.025	±0.025	±0.025	±0.025
Side Load Sensitivity – %		±0.25	±0.25	±0.25	±0.25	±0.25	±0.25
Eccentric Load Sensitivity – % / in		±0.25	±0.25	±0.25	±0.25	±0.25	±0.50
TEMPERATURE							
Compensated Range	°F	+15 to +115	+15 to +115	+15 to +115	+15 to +115	+15 to +115	+15 to +115
	°C	-10 to +45	-10 to +45	-10 to +45	-10 to +45	-10 to +45	-10 to +45
Operating Range	°F	-65 to +200	-65 to +200	-65 to +200	-65 to +200	-65 to +200	-65 to +200
	°C	-55 to +90	-55 to +90	-55 to +90	-55 to +90	-55 to +90	-55 to +90
Effect on Zero – %RO / deg	°F	±0.0008	±0.0008	±0.0008	±0.0008	±0.0008	±0.0008
	°C	±0.0015	±0.0015	±0.0015	±0.0015	±0.0015	±0.0015
Effect on Output – % / deg	°F	±0.0008	±0.0008	±0.0008	±0.0008	±0.0008	±0.0008
	°C	±0.0015	±0.0015	±0.0015	±0.0015	±0.0015	±0.0015
ELECTRICAL							
Rated Output – mV/V (Nominal)		4.0	4.0	4.0	4.0	4.0	4.0**
Excitation Voltage – VDC MAX		20	20	20	20	20	20
Bridge Resistance – Ohm (Nominal)		350	350	350	350	350	350
Zero Balance – %RO		±1.0	±1.0	±1.0	±1.0	±1.0	±1.0
Insulation Resistance – Megohm		5000	5000	5000	5000	5000	5000
MECHANICAL							
Safe Overload – %CAP		±150	±150	±150	±150	±150	±150
Deflection @ RO – w/Base	in	0.012	0.006	0.007	0.008	0.008	0.010
	mm	0.30	0.15	0.18	0.2	0.2	0.25
Optional Base – P/N (Metric)		B105 (M)	B116 (M)	B121 (M)	B122 (M)	B123 (M)	B125 (M)
Natural Frequency – kHz		4.9	5.0	5.5	5.5	5.5	5.5
Weight	lbs	68	70	100	200	450	860
	kg	30.9	31.8	45	90	205	390
Calibration		Tension & Compression					
Material		Alloy Steel					

**Calibrated to 1000K only

OPTIONS

- Base (recommended)
- Multiple bridge
- Standardized output
- Transducer Electronic Data Sheet (TEDS)
- Special temperature range

International System of Units (SI) dimensions and capacities are provided for conversion only. Standard products have U.S. capacities and dimensions. SI capacities available upon special request and at an additional cost.

CONNECTOR OPTIONS

- PT02E-10-6P Bayonet Connector
- PC04E-10-6P Screw-Type Connector

ACCESSORIES

- Mating connector
- Mating cable
- Instrumentation
- Loading hardware



tel: +34 915 679 700
www.alavaingenieros.com | alava@grupoalava.com